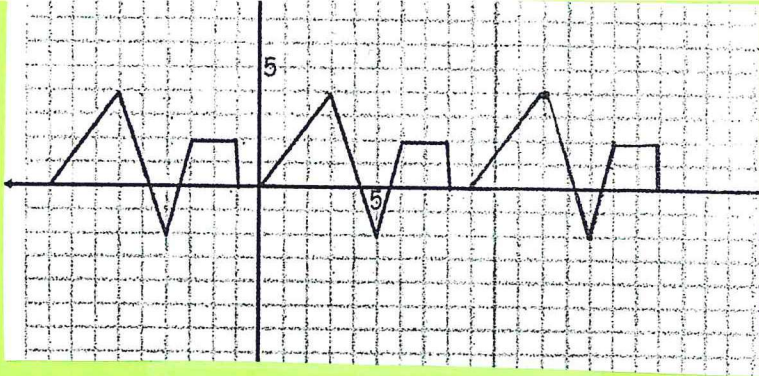


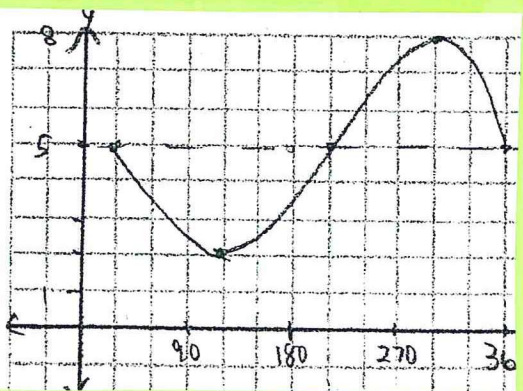
# 3U Unit 5 Review Stations

| Station | Answer(s)  |
|---------|--|
| A       | i) b,c,d,e,      ii) b,c   |
| B       | 1. 48 sec<br>2. 3.75<br>3. 5.0   |
| C       | a) 3      b) 9      c) 4      d) -2<br>e) 2      f) $F(3)=4$ g) on graph paper   |
| D       | Sine: $y = 2 \sin 3(x-30) + 3$ Cosine: $y = 2 \cos(3(x+60)) + 3$<br>Or $y = -2 \cos 3x + 3$  |
| E       | On graph paper!  |
| F       | a) on graph paper<br>b) $h(t) = -15 \cos 4.5x + 20$ $y = 15 \sin 4.5(x-20) + 20$<br>c) amp is bigger<br>axis of curve is higher<br>period is shorter |
| G       | a) max: 5m      min: 1m<br>b) 12 hours<br>c) on graph paper<br>d) midnight $\rightarrow$ 6am      and      noon $\rightarrow$ 6pm                    |

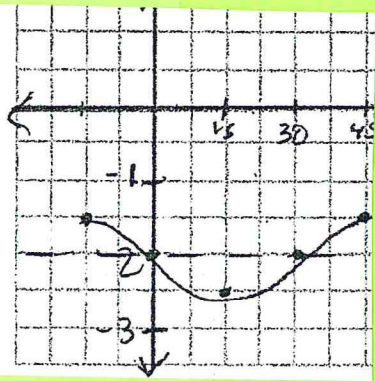


E

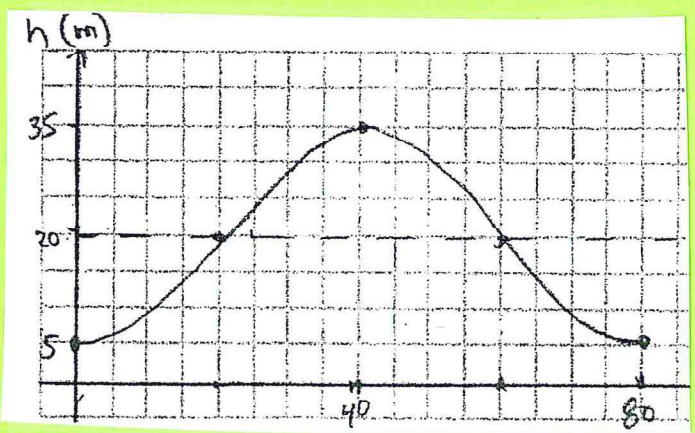
amplitude 3  
 period 360°  
 phase shift R+30°  
 vertical shift up 5



amplitude 1/2  
 period 60  
 phase shift left 15  
 vertical shift down 2



six cycles  
1080



G

